



Type of Manuscript: Original Research Article

A Clinical Evaluation of Breast Lump in Women With Respect To Health Status

¹Dr. Shankara S Maya, MS, Department of General Surgery, KVG Medical College and Hospital, Sullia

²Dr. Chandan Kumar, MS, Department of General Surgery, KVG Medical College and Hospital, Sullia

Corresponding Author: Dr. Shankara S Maya, MS, Department of General Surgery, KVG Medical College and Hospital, Sullia

Email: shankara.maya23@gmail.com

Open Access Article: © 2026, Dr. Shankarachari S Maya, et al. This is an open access journal and article distributed under the terms of the creative common's attribution license (<http://creativecommons.org/licenses/by/4.0>). Which allows others to remix, tweak, and build upon the work non-commercially, as long as appropriate credit is given and the new creations are licensed under the identical terms.

Conflicts of Interest: Nil

Abstract

Introduction: A Breast lumps are common findings in the female breast, presenting in conjunction with other symptoms such as breast pain and discharge from the nipple.

Aims and Objectives

1. To management plan is tailored according to the nature of the lump
2. To study the extent of delay among breast Lump patients

Material and Method:

Study Design: Clinical and Observational Study

Study Period: 24 Months

Place of study: Department of General Surgery, KVG Medical College and Hospital, Sullia

Sample Size: 150

Result: Among 150 women, the largest subgroup was 31–40 years (33.33%), followed by 41–50 years (26.67%).

Discussion: Women with different socio-economic backgrounds show different clinical profiles. SES shapes patients' clinical stories and provides a framework to inform outreach and enhance care.

Keywords: Breast Lump, Biopsy, Female Breast, Ultrasonography

Introduction

A Breast lumps are common findings in the female breast, presenting in conjunction with other symptoms such as breast pain and discharge from the nipple. While many breast lumps are benign and self-limiting, their clinical evaluation, diagnosis, management, and

prognosis are influenced by a variety of factors, including socioeconomic status (SES). Sociodemographic variables such as socioeconomic status affect women's diagnostic pathways. Women with different socio-economic backgrounds show different clinical profiles. In lower-income groups, access to imaging or biopsy may be

delayed or unavailable due to the high cost, lack of trained personnel, or inadequate healthcare infrastructure. Consequently, women may rely on traditional healers, delay seeking appropriate care, or default from follow-up. These delays often result in progression of benign conditions to more complicated forms or malignancies being diagnosed at advanced stages, thereby limiting treatment options and worsening outcomes.

Aims and Objectives

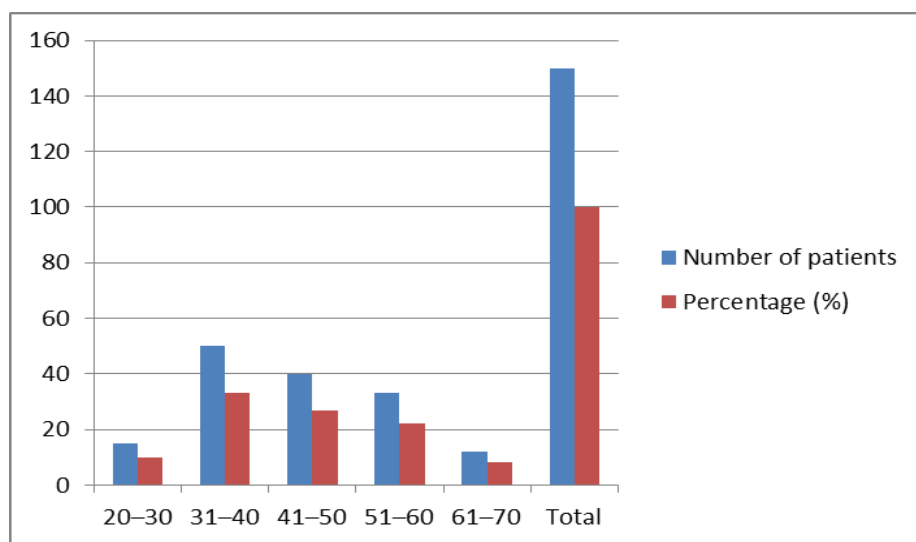
1. To management plan is tailored according to the nature of the lump
2. To study the extent of delay among breast Lump patients

Result

Table 1: Age-Wise Distribution of Patients

Age group (years)	Number of patients	Percentage (%)
20–30	15	10.00
31–40	50	33.33
41–50	40	26.67
51–60	33	22.00
61–70	12	8.00
Total	150	100.00

Graph 1: Age-Wise Distribution of Patients



Materials and Methods:

Study Design: Clinical and Observational Study

Study Period: 24 Months

Place of study: Department of General Surgery, KVG Medical College and Hospital, Sullia

Sample Size: 150

Inclusion Criteria

- Patient aged 20 years and above
- Patients Diagnosis with breast lump.

Exclusion Criteria

- Patient who not interested in participate in study
- Patients who absent

Table 2: Occupation Distribution of Patients

Occupation	Number of patients	Percentage (%)
Housewife	35	23.33
Agricultural worker	70	46.67
Service	20	13.33
Business	12	8.00
Others	13	8.67
Total	150	100.00

Graph 2: Occupation Distribution of Patients

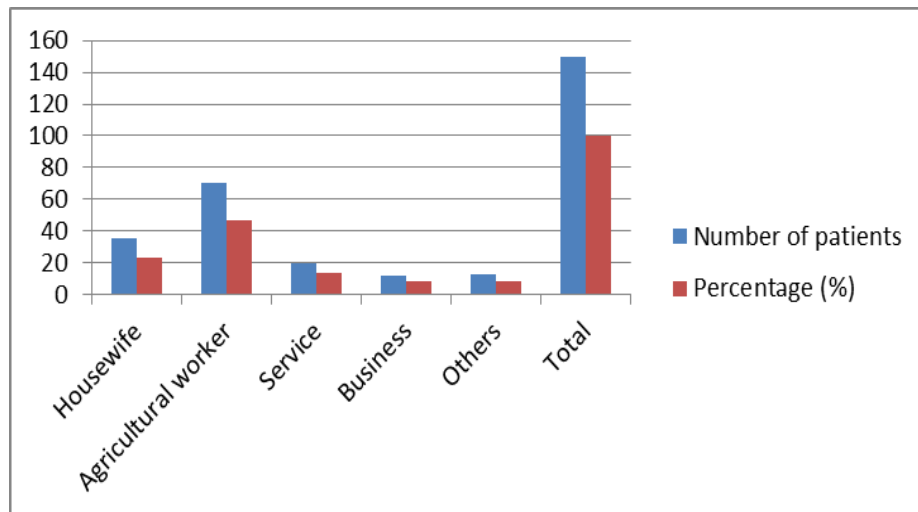
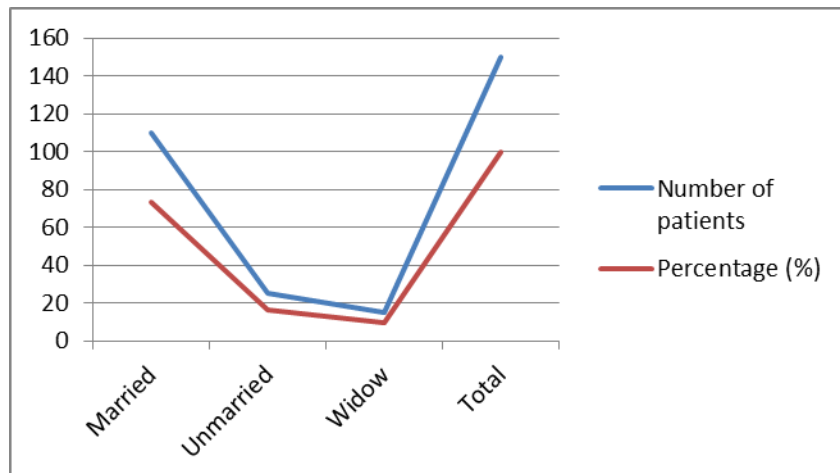


Table 3: Marital Status of Patients

Status	Number of patients	Percentage (%)
Married	110	73.33
Unmarried	25	16.67
Widow	15	10.00
Total	150	100.0

Graph 3: Marital Status of Patients



Discussion

Considerations for practice and policy emerge from findings about socioeconomic status (SES) and breast lump presentation, diagnosis, and management pathways. SES shapes patients' clinical stories and provides a framework to inform outreach and enhance care.

SES shapes patients' clinical stories and provides a framework to inform outreach and enhance care. By linking determinants (socioeconomic class, literacy, occupation) with processes (delays), disease severity (stage), care delivered (surgery, systemic and radiation therapy), and early outcomes (complications, quality of life), the study creates an integrated evidence base to guide equity-focused redesign of breast services.

Conclusion

Breast cancer is one of the most frequently diagnosed cancers among women, with about 2.5 million new cases estimated globally in 2030. Most patients present at an advanced stage, 90% diagnosed when the disease is no longer curable. A contributing factor may be the socioeconomic status (SES) of South Africans, which in turn directly affects personal decisions regarding breast health screening, awareness, education and accessibility to treatment options.

References

1. National Breast Cancer Foundation Inc. What's The Difference between a Breast Self-Exam and a Clinical Breast Exam? National Breast Cancer Foundation, Inc.; 2018 [updated 2018]. Available from: <https://www.nationalbreastcancer.org/clinical-breast-exam>. [Last accessed on 2018 Nov 03].
2. Ferguson D. Breast cancer and other breast lumps. *InnovAiT*. 2016;9:179 – 184.
3. Meretoja T, Leidenius M. [Breast lump in a young woman]. *Duodecim*. 2015;131(15):1353–1359.
4. Murali U, Cunden SM. Clinico-pathological correlation of breast lumps in Mauritian women. 2015.
5. Mohamed Z. Comparison between the patterns of common breast diseases presenting as breast lumps in pregnant and non-pregnant married women. *Kufa Med J*. 2020;15(2):13–17. doi:10.47723/kcmj.v15i2.154
6. Mathew IK, Gopal A. A clinico-pathological correlation of breast lumps in a tertiary care centre. *J Evol Med Dent Sci*. 2023;12(8). doi:10.14260/jemds.v12i8.467
7. Bazira PJ, Ellis H, Mahadevan V. Anatomy and physiology of the breast. *Surgery (Oxford)*. 2021; 39(11):687–92.
8. Alwan NA. *The Breast: Anatomy and Histology*. 2014.
9. Ugwu-Olisa OA, Nnamdi AS, Gregory N, Festus I. Clinicopathologic study of breast lumps in Abakaliki, South Eastern Nigeria. *Asian J Med Sci*. 2016; 7(3):58-64. doi:10.3126/AJMS.V7I3.13772.
10. Akter S, Islam J, Haque S. Fine Needle Aspiration Cytology of Palpable Breast Lumps - Their Cytological Spectrum and Histopathological Correlation. *KYAMC J*. 2017;7:780-786. doi:10.3329/KYAMCJ.V7I2.33838.
11. Narayan Das N, Debbarma A, Debbarma G. A clinico-pathological study of benign breast diseases in rural population. *Int J Res Med Sci*. 2014;2:1067-9.
12. Smallwood J, Herbert A, Guyer P, Taylor I. Accuracy of aspiration cytology in the diagnosis of breast disease. *Br J Surg*. 1985;72:841-3.
13. Dandapat MC, Panda BK. Fine needle aspiration as a primary adjunct in the diagnosis of palpable breast lumps. *J Indian MA*. 1986;84(1):3

14. Patil KS, Ragupathi S, Bhaskar PS, Ambujam G. Mammographic screening in benign breast diseases for risk stratification of malignancy; J Med Sci Clin Res. 2017;5(12).
15. Kulkarni S, Vora IM, Ghorpade KG, Srivastava S. Histopathological Spectrum of Breast Lesions with Reference to uncommon cases. J Obstet Gynecol India. 2009;59(5):444-52